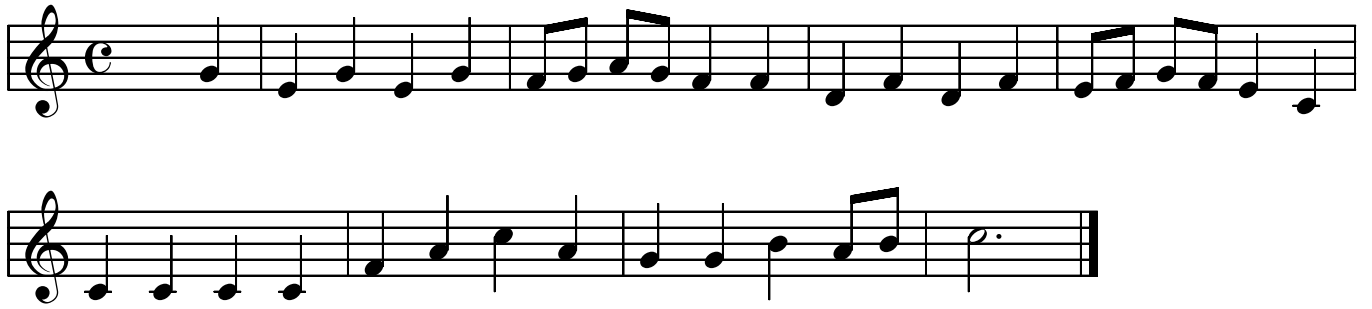


Volkslieder

1.



2.



3.



4.



5.



6.



7.



8.

Musical notation for exercise 8, consisting of three staves in treble clef with a key signature of one sharp (F#) and a common time signature (C). The first staff contains 12 measures, the second staff contains 12 measures, and the third staff contains 6 measures, ending with a double bar line.

9.

Musical notation for exercise 9, consisting of three staves in treble clef with a key signature of two sharps (F# and C#). The first staff contains 12 measures, the second staff contains 12 measures, and the third staff contains 6 measures, ending with a double bar line.